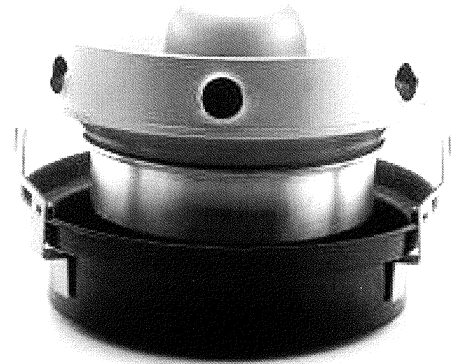


MODEL SF-10/SW-10 SF-10B/SW-10B

Sample specifications for SF-10/SW-10 & SF-10B/SW-10B

Cold water centrifugal atomizing type humidifier and mounting brackets for installation overhead. Water reservoir includes valve to automatically regulate water flow. Atomizer includes motor, impeller, disc and breaker comb to produce a fine vapor and introduce moisture with a small amount of air through the vapor dome to the surroundings. All water exposed parts to be copper, brass or non-ferrous alloy.

SF10 includes an air filter to protect atomizing unit from dust, lint etc. in the small amount of primary air that passes through the atomizer. Must be UL listed for US and Canada.



SPECIFICATIONS

CAPACITY

Moisture Output – 10 lb./hr.

WEIGHT

Net: 28 lb.

Shipping: 31 lb.

Operating: 40 lb.

WATER CONNECTIONS & PRESSURES

Supply: 1/8" Male Pipe Thread

Overflow: 1/4" Female Pipe Thread

Operating Pressure Range: 10-100 psig.

Electric Motor

Model SF-10 & SW-10

1.15 amps, 115 volts, 1 ph – 50/60 hz.

Model SF-10B & SW-10B

.55 AMPS, 220 volts, 1 ph – 50/60 hz.

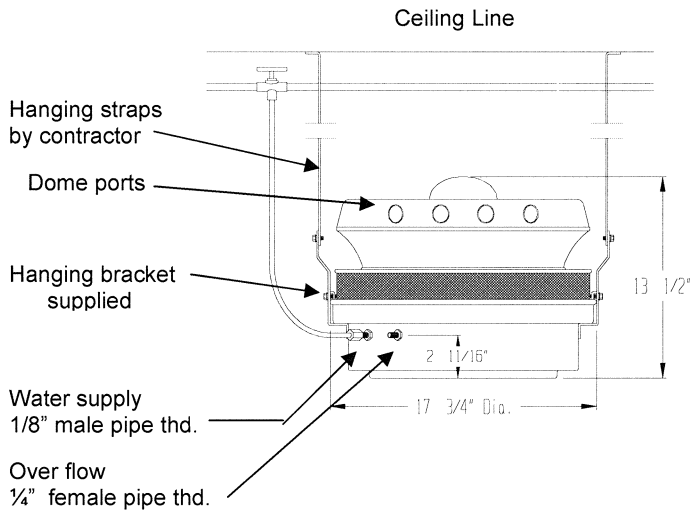


Notes:

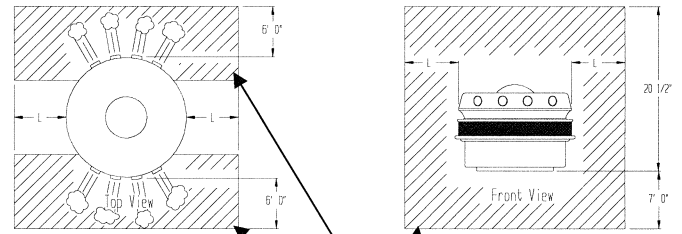
SF Models equipped with filters of a washable, replaceable filter media type. Proper dome selection must be made.

These specification are subject to change without Notice. Mounting brackets supplied with units.

Humidity Source ATOMIZING humidifiers produce moisture that will quickly be absorbed in to the air, However, It is very important that the humidifier be installed so there is on chance of the moisture striking **any object** before it has been absorbed in the air. If any solid object is hit with air containing suspended or absorbed moisture, condensation and dripping will result. It is therefore most important that all directions and minimum dimensions be strictly adhered to.



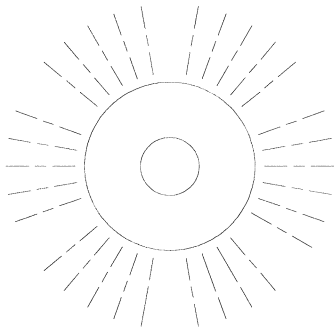
Note: Drawing not to scale



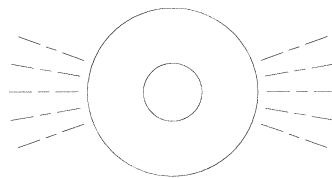
Two way Dome shown

No obstruction within this region
To prevent wetting object for
One and Two way Domes, L = 41"
For Standard Dome, L = 6' 0"

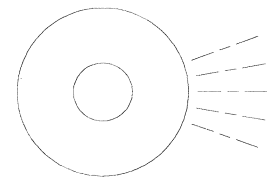
IMPORTANT: Select proper Dome to avoid condensation on obstructions.



Standard Dome



Two way directional Dome



One way Directional Dome