

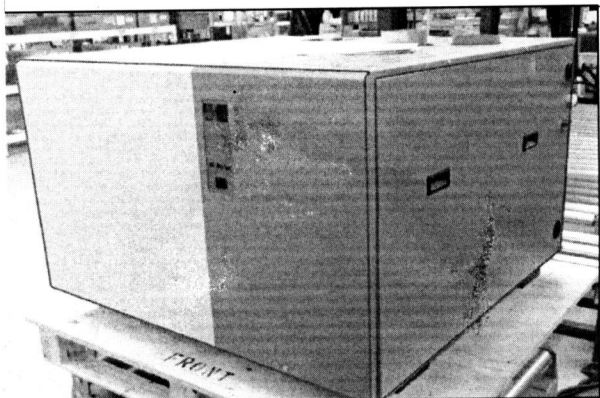
## Differential Pressure Switch Kit GS - Replacement Instructions



### CAUTION: SERVICING

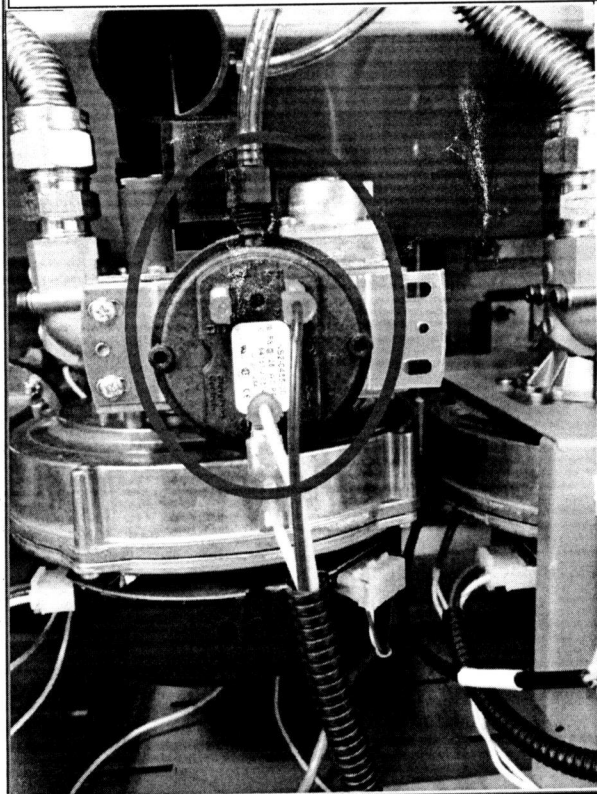
- DISCONNECT MAIN POWER SOURCE BEFORE ACCESSING INTERNAL COMPARTMENTS.
- THE PLUMBING AND ELECTRICAL COMPARTMENTS MAY CONTAIN HIGH VOLTAGE COMPONENTS AND WIRING. ACCESS SHOULD BE LIMITED TO AUTHORIZED PERSONNEL ONLY.
- DURING AND FOLLOWING OPERATION OF THE HUMIDIFIER, THE STEAM COMPONENTS IN CONTACT WITH THE STEAM CAN BECOME HOT AND BURN IF TOUCHED.
- NORTEC DOES NOT ACCEPT ANY LIABILITY FOR INSTALLATIONS OF HUMIDITY EQUIPMENT INSTALLED BY UNQUALIFIED PERSONNEL OR THE USE OF PARTS/ COMPONENTS/ EQUIPMENT THAT ARE NOT AUTHORIZED OR APPROVED BY NORTEC.

### Step 1: Removing access door

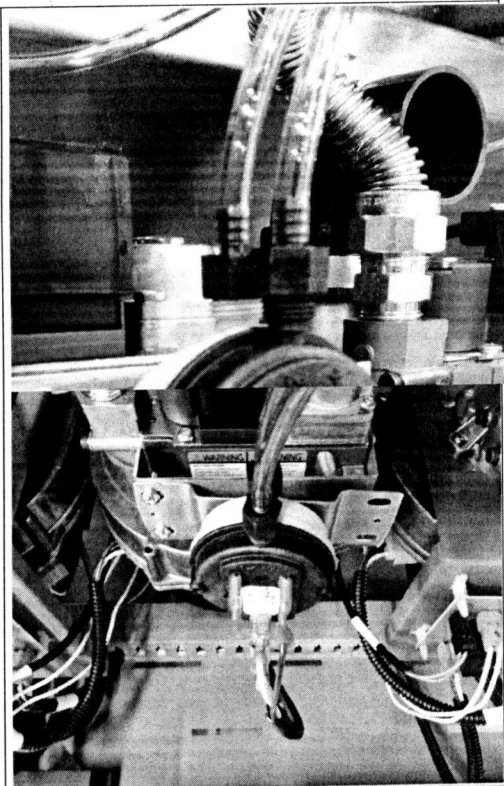


1. Turn off the unit by placing the On/Off switch to the 'Off' position.
2. Turn off the GAS SUPPLY to the unit.
3. Shut down and lockout the external power disconnect.
3. Remove the side access door seen on the RIGHT of the unit by undoing the screws along the top of the panel and then lifting upwards then pulling away.

### Step 2: Replacing Switch Pressure Differential



1. Locate the pressure switch mounted on the gas valve (image left). There may be multiple switches. Verify which switch is defective.
2. Using a screwdriver, remove the two screws holding the switch.
3. Unplug the two air tubes seen in the image to the right. Note proper orientation.
4. Remove the two wires connected to the switch.
5. Replace the switch and reverse the previous instructions.
6. Close the access door and turn on the gas supply and power.



Switch Pressure Differential Kit Field GS

Replacement Instructions – Page 1 of 1

2581333

Revision A

Date: 08/07/2014